

# City and Hackney ICP / Place-based Partnership

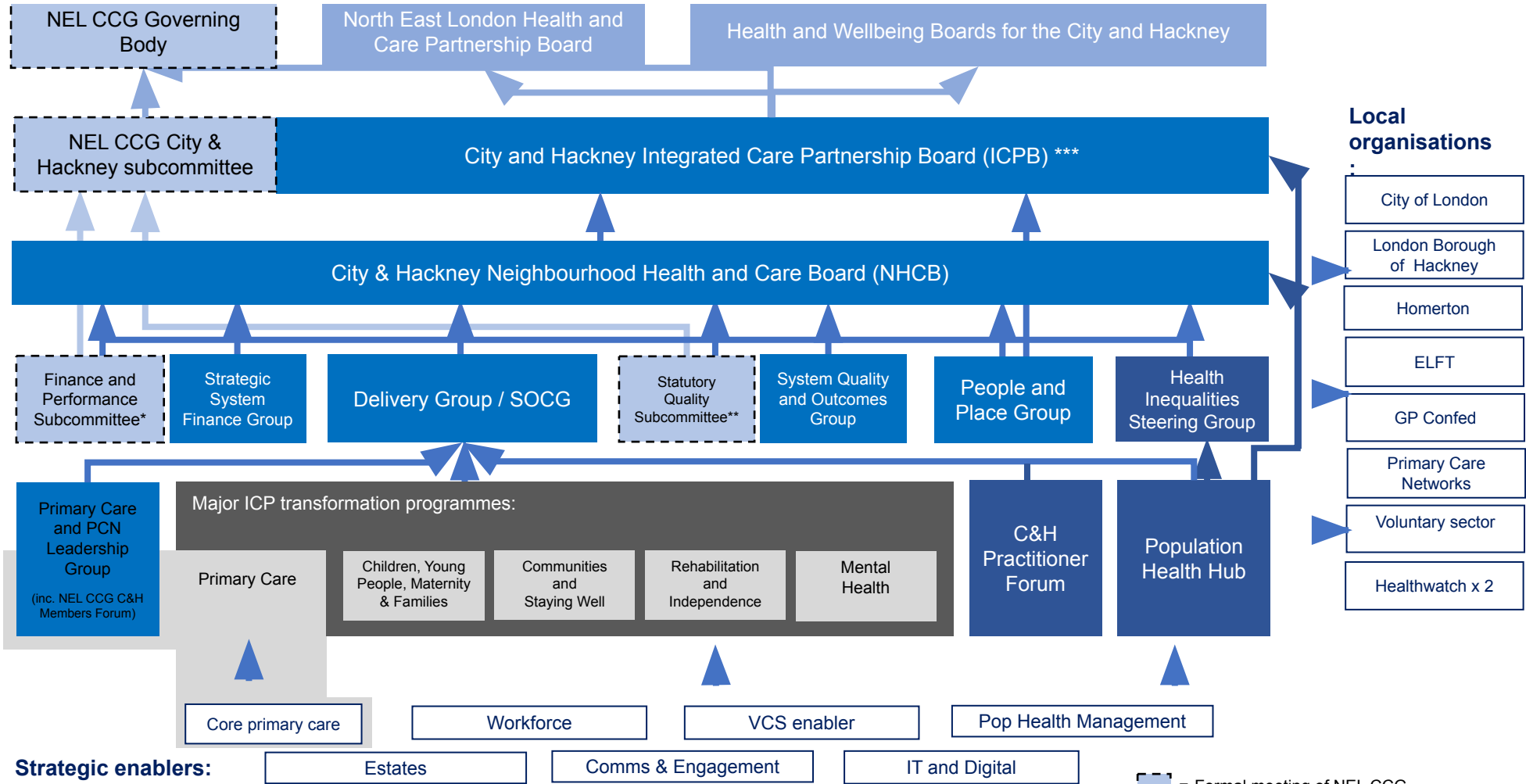
June 2022



# Context and Introduction

- These slides provides an update on the City and Hackney Place Based Partnership in the context of the NHS reforms which take effect on 1<sup>st</sup> July 2022
- Within the legislation, there is an expectation that Place Based Partnerships (PBPs) are formed within each ICS. These provide a key role in driving integration, connecting with communities and addressing local health inequalities. City and Hackney is now one of 7 PBPs within North East London.
- Health and Care Services in City and Hackney have had a formal partnership structure in place for a number of years. The new legislation means that, from 1<sup>st</sup> July 2022, there will be some changes to this. Some of these are superficial, such as name changes to reflect the language in the policy guidance, some are more significant such as formally breaking down previous divides between commissioners and providers. Over time, we hope that the legislation and related white papers to enable stronger collaboration at place.
- The legislation has provided a useful juncture for us to further build and strengthen our partnership in order to deliver improved outcomes for our local population.
- All of the NEL CCG staff are being transferred to the NEL Integrated Care Board – NEL CCG will no longer exist from 1<sup>st</sup> July. There will still be a City and Hackney team within the NEL ICB (as there is within the NEL CCG).
- It is worth noting that as part of the new legislation the Barking&Dagenham, Havering and Redbridge (BHR) and Tower Hamlets, Newham and Waltham Forest (TNW) multi-borough structures are being scaled back to enable each of these boroughs to form their own PBP.
- This will be an evolving picture over the next few years, and there is still a lot of detail to work out.

# Reminder of the City and Hackney Integrated Care Partnership operating model (developed in 2021)



\*= **Finance and Performance Subcommittee** exercises NEL CCG statutory duties and operates with delegated authority from the NEL CCG City and Hackney Subcommittee

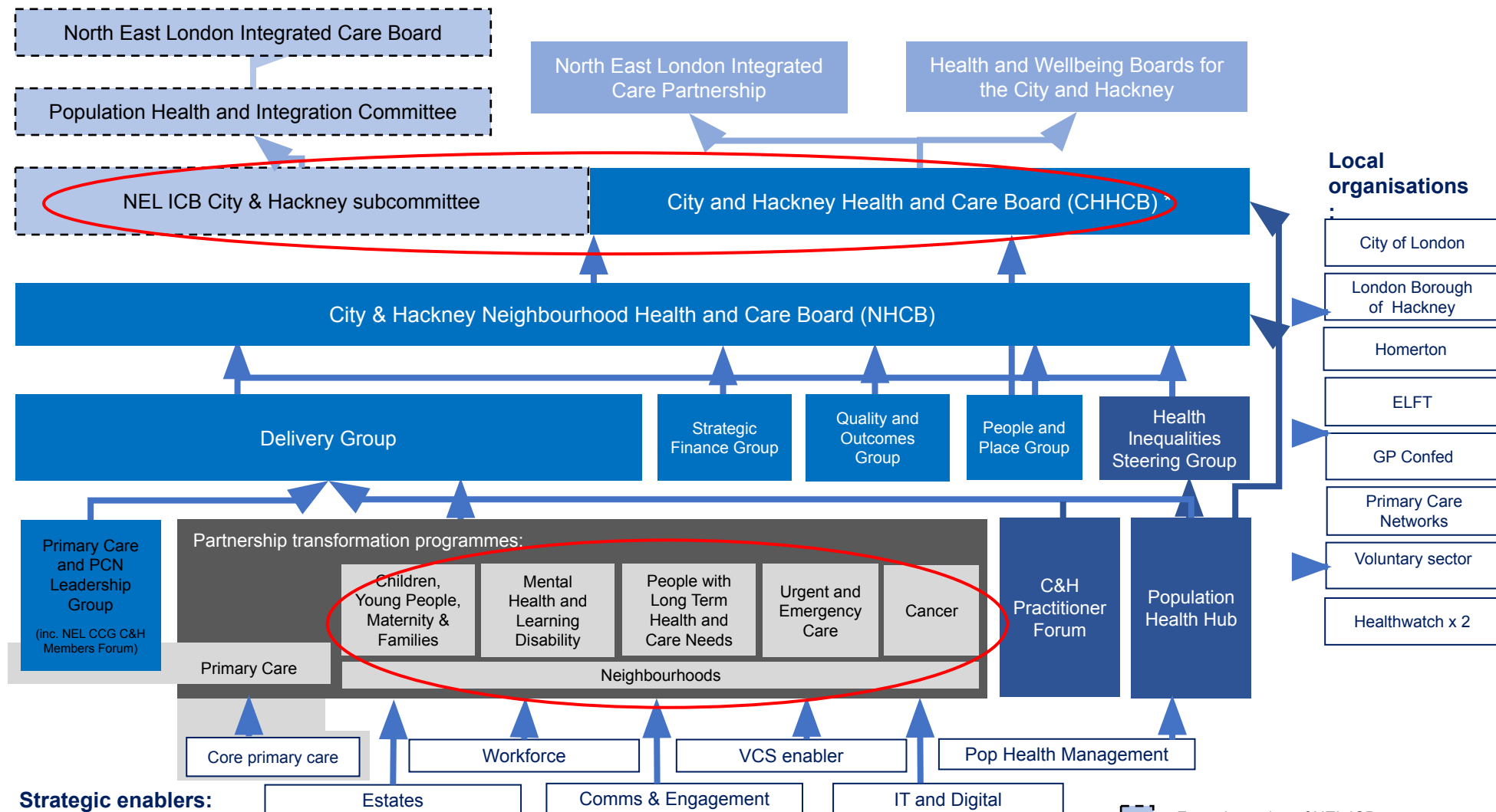
\*\* = **Quality Subcommittee** exercises NEL CCG statutory duties

\*\*\* = The **Integrated Care Partnership Board** operates under a 'committees in common' structure with sub-committees from both the City of London Corporation and the London Borough of Hackney, allowing for delegated decision making for pooled budgets.

# Developments for City and Hackney

- City and Hackney's Integrated Care Partnership Board (ICPB) will, from September change its name to the **City and Hackney Health and Care Board (CHHCB)**. It will continue to be chaired by a member from both City and Hackney.
- We have used the transition to the ICS as a juncture to review and strengthen our own partnership. This has included refreshing our partnership strategic priorities, and considering how we can work more effectively together.
- A key element to this has been strengthening the link between the CHHCB and the Health and Wellbeing Board; the CHHCB have formally adopted the Hackney Health and Wellbeing Board strategic priorities a part of the refresh of their strategy (see page 6)
- Partners in City and Hackney have been using these strategic priority areas to re-align our transformation programme resources to ensure delivery of an Integrated Delivery Plan
- Key appointments have been made to support the partnership, including formalising the Place Based Leader being within the remit of the incoming Homerton CEO (Louise Ashley), the appointment of a Partnership Clinical Lead (Stephanie Coughlin) and Partnership Delivery Director (Nina Griffith). Catherine Pelley, who was the Chief Nurse at the Homerton is supporting the partnership until Louise starts in the autumn.

# City and Hackney's proposed Place-based Partnership governance within NEL ICS



- The **City and Hackney Health and Care Board** operates under a 'committees in common' structure with sub-committees from both the City of London Corporation and the London Borough of Hackney, allowing for delegated decision making for pooled budgets.

Red circle highlights changes post 1<sup>st</sup> July

# Strategic focus areas for the City and Hackney Place-based Partnership (Spring 2022)

“Working together with our residents to improve health and care, address health inequalities and make City and Hackney thrive”

## Reducing health inequalities

**Giving every child the best start in life**  
(often by recognising the role of families)

**Improving mental health and preventing mental ill-health**

**Preventing and, improving outcomes for people with long-term health and care needs**

*Population health priority outcome areas*

**Increasing social connection**

**Ensuring healthy local places**

**Supporting greater financial wellbeing**

**Joining up local health and care services around residents and families' needs**

**Taking effective action to address racism and other discrimination**

**Supporting the health and care workforce**

*Cross-cutting approaches*



=Hackney HWB focus area



= Hackney HWB specific 'lenses': (approaches to reducing health inequalities)



= NEL ICS four partnership priority areas



= reflecting LTP response / long term C&H partnership ambitions / Neighbourhoods Programme vision

# Proposed governance of North East London Integrated Care System

